

## 相 思 曲

1 = C  $\frac{2}{4}$ 

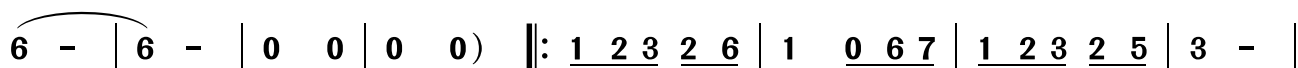
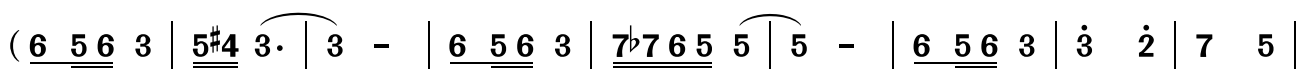
电影《绣春刀》主题曲

任 盈 洁 作词

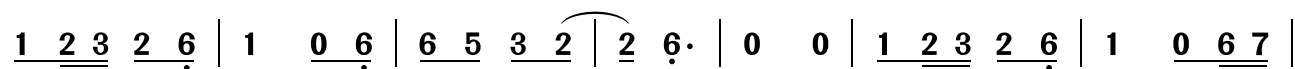
Nathan Wang/shelly ren 作曲

演唱：汪妤凌

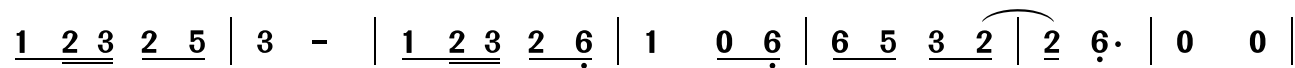
桃李醉春风 记谱



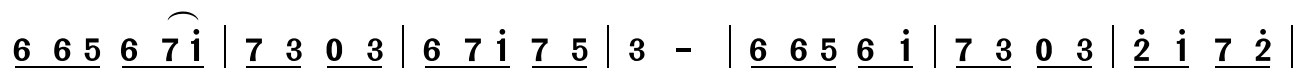
乱世中谁等候，一壶牵挂灼难入喉，  
乱世中谁等候，一壶牵挂灼难入喉，



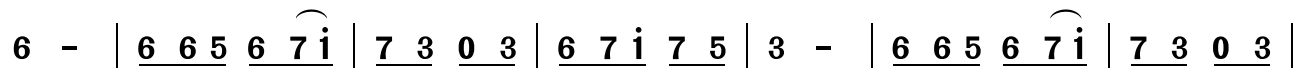
残月斜映寂寞，岁月风霜轮廓。苍茫中谁停留，一坛  
残月斜映寂寞，岁月风霜轮廓。蓦然中你回首，一纸



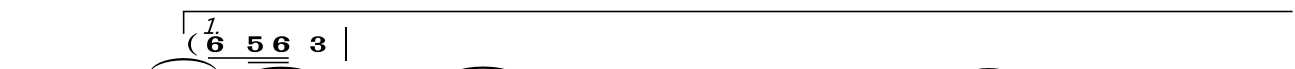
思念溢倾泄流，锦衣余留温柔，红颜飞雪凋落。  
眷恋映上眼眸，封刀归隐漂泊，伊人华发斑駁。



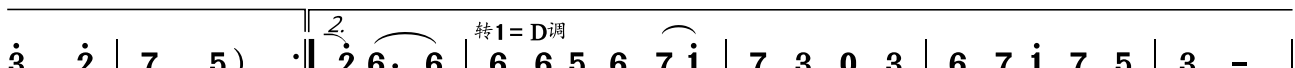
眺眼望穿回首路，我独唱着相思曲，月夜里古风喃语，深闺独绣思



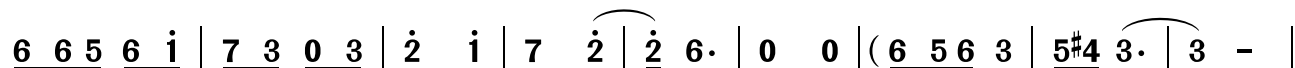
绪。眺眼望穿回首路，我独唱着相思曲，朱窗前心誓相许，盼



君归情再继续。



续。眺眼望穿回首路，我独唱着相思曲，



朱窗前心誓相许，盼君归情再继续。

